



Magapor

GENERAL
CATALOGUE
V.04.26

MAGAPOR



Just for pigs

More than 35 years providing practical and innovative solutions for swine artificial insemination

Our entrepreneurial and innovative spirit drives the R&D department. We have a multidisciplinary team of biochemists, veterinarians, engineers and computer scientists working to improve our products and designing and developing new solutions for our sector.

Our hallmark is founded on three key attributes and aspects of the company's philosophy:

- Specialists in swine reproduction
- Unique products
- Technical service with a clear aim of improving customer productivity



Magapor corporate catalogue. We reserve the right to amend this catalogue. All rights reserved.
© Magapor, S.L. The products, services and information in this document may be subject to change and/or variation with regard to the texts and images shown.

GESIPOR 360

Software for the comprehensive management of the production of semen doses

“TOTAL TRACEABILITY IN THE PRODUCTION OF SEMEN DOSES



BOARS



ANALYSIS



DILUTION



PACKAGING



TRACKING



PLANNING



GENETICS



OPERATORS

+ ANALYTICS MODULE



PERSONALISED REPORTS
CENTRE REPORTS
PRODUCTIVITY
EXTRACTION MONITORING

+ TRACKING MODULE

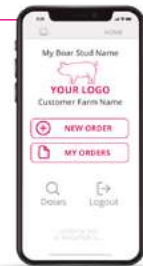


HEALTH PLAN
TRACEABILITY
VISITS
WAREHOUSE

+ ORDERS MODULE



ORDERS
DELIVERY NOTES
STOCKS
TRANSPORTATION DATA



+ DATA SERVICE



PROTECTED DATA
CLOUD BACKUP
360 INFORMATION ACCESS

WEB VIEWER
CUSTOMER APP CONNECTION
MANAGEMENT APP ACCESS

› Perfectly adaptable to user needs, it offers **full control over all Boar Stud production parameters.**

- Forecasts and schedules extractions.
- Standardises and records production processes (analysis, dilution and packaging).
- Manage orders and delivery notes.
- Allows full traceability of dose production.
- Monitors and controls the Boar Stud health plan.
- Provides all data through customised reports.

Characteristics:

- Multi-user and multi-centre.
- Connectivity with equipment (see Magapor Integrated System functionalities).
- Online and offline mode.

Advantages:

- Avoids human error.
- User-friendly.
- On-going development by our IT and R&D departments.



“EASY TO USE, HELPS YOU FULLY MANAGE PRODUCTION AND CHECK DATA AT ANY TIME WHEREVER YOU ARE

MAGAPOR INTEGRATED SYSTEM

Total automation: Planning + Collection + Analysis + Dilution + Packaging



Gesipor enables integration and automation of all processes involved in the production of semen doses, with accurate traceability from collection to the farm, using the Magapor Integrated System work concept.

The information flow is preserved and managed through the Gesipor software, for total control and analysis of the results.



ZEBRA PRINTER

Thermal printer to link with Gesipor.



GESIPOR SCALE

Automatic ejaculate volume.



LABELS

Different models.



QR AND BARCODE READER

Automatic data entry in Gesipor.

ERGOS

Collection dummy

COMFORT, RESISTANCE
AND HYGIENE DURING
COLLECTION



CE

50 Kg
95 x 65 x 45 cm

53 Kg
100 x 34 x 60 cm

- **Versatile:** for both manual collection and automatic collection with Autocollect.
- **Ergonomic:** comfortable and safe for the boar, anchored to the ground for more secure support.
- **Resistant, quick and easy to clean:** built from stainless steel.
- **Suitable for any boar:** adjustable height with optional extenders.



ERGOS RCA

Collection dummy with hydraulic lifting system

☞ Reduces time and injuries



50 Kg
95 x 65 x 45 cm

53 Kg
100 x 34 x 60 cm

- **Time optimization:** It facilitates the adaptation of the boar to the dummy and reduces mounting times.
- **Fewer injuries:** reduces boars with problems.
- **Increased productivity:** Improved ejaculate quality and volume due to the position of the boar.
- **Improved training and learning:** The boar can learn directly on the production dummy.
- **With the same benefits of the Ergos dummy**



AUTOCOLLECT

System for the automated collection of ejaculate

INCREASES DOSE PRODUCTION PER BOAR BY UP TO 40%



It consists of a mobile guide, which can be installed inside the Ergos dummy, and mobile elements to attach the Autocollect Cervix and thermos

- It has a fixed or free movement position for the animal.
- The boar gets off after ejaculating.
- Its position protects the collection thermos from any blows by the boar.



› Advantages of the Ergos dummy + Autocollect

- Increases dose production per boar by up to 40%.
- Allows the operator to collect from two boars at the same time.
- Reduces the variability of results between operators, standardising the collection process.
- Suitable for all breeds and facilities.
- Facilitates and optimises the operator's work.
- Hygienic: reduces the risk of bacterial contamination of the ejaculate.



 300 units/box
 1 Kg
 35 x 23 x 25 cm

AUTOCOLLECT CERVIX

Comfort and hygiene

- Disposable, which protects and prevents any injury to the boar's penis, allowing a perfect fit and improving stimulation.
- Prevents possible contamination by improving hygiene during collection.



> ERGOS MOBILITY
Mobile dummy

- Easy portability.
- Comfortable for the boar.
- Strong, built from stainless steel.
- Hygienic, easy to clean.

CE 19 Kg 80 x 40 x 55 cm 21 Kg 95 x 50 x 60 cm



NON-SLIP MAT

15 Kg
100 x 150 x 2 cm



COLLECTION THERMOS



FILTERBAG

50 units/pack



GLASSES AND FILTERS



GSP READER

Instantly identifies the operator and the boar.



GSP PRINTER

Bluetooth thermal printer.
LABELS



18 x box



GSP KEYRING

For operator identification.

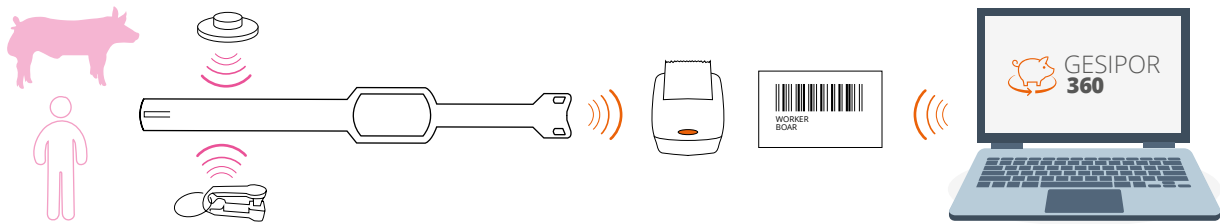


GSP EARTAGS

For boar identification.



10 units



MAGAVISION

CASA system for fast and accurate evaluation of semen quality with machine learning Software.



FAST
SIMPLE AND
PRECISE

MAGAVISION
tech

MAGAVISION
prem

MAGAVISION
elite



MAGAPOR
INTEGRATED
SYSTEM
21 Kg
61 x 43 x 55 cm
+ SmartStage
23 Kg
68 x 43 x 63 cm

- > CASA system for semen quality evaluation with machine learning engine and Artificial Intelligence, specifically for boar semen.

Available in 3 different versions (**tech**, **prem** and **elite**) to suit all needs.

It allows an objective and standardized analysis of the main semen quality parameters:

- **Total, progressive, individual and circular motility**
- **Concentration**
- **Identifies motile and normal spermatozoa**
- **Abnormal forms (total or disaggregated depending on the version)**
- **Classify speeds**
- **Kinetic parameters (depending on the version)**
Discriminate and calculate agglutinations.

Complete ejaculate analysis:

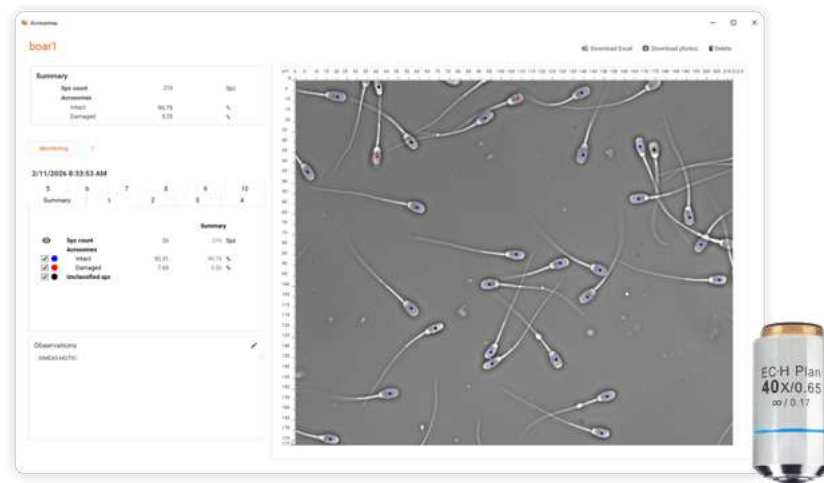
- Objective and accurate.
- Quick analysis.
- Provide the number of doses to be packaged.
- Real 5 Mpx camera for superior image quality.
- Analyses 1 sec. video at 60 frames.
- Adaptable to the needs of any centre thanks to its versatility.
- Automatically saves photos and videos.
- Different user types
- Provides fully customised reports.

- All data can be archived in the Gesipor database.
- Compatible with SmartStage.



ACROSOME MODULE

Tool for sperm analysis



- > MagavisionML module for acrosome integrity analysis:
 - With Artificial Intelligence and Machine Learning technology.
 - No fluorescence or staining

- required.
 - Identifies intact and damaged acrosomes.
 - The system uses images taken with a 40x objective lens with negative

- phase contrast.
 - Compatible with all versions of Magavision.
 - Compatible with SmartStage.

SMARTSTAGE

Motorised and heated stage



Controller



Engine

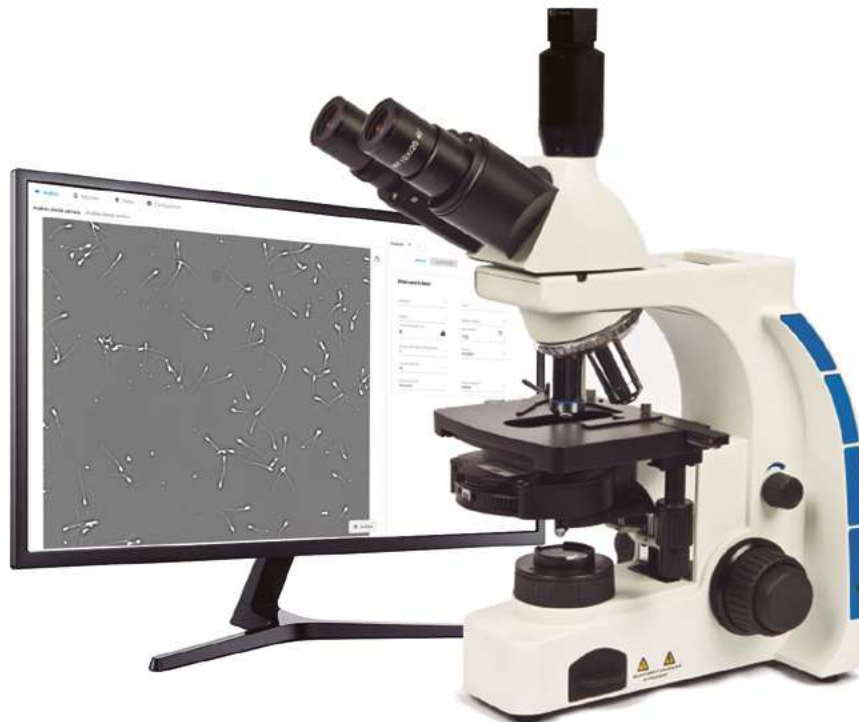
- > High-speed, motorized, heated and auto-focusing stage for the CASA system Magavision.

- It allows for simultaneous multi-tracking and multi-analysis of up to 20 doses and ejaculates.

- Analyses 20 samples in less than 5 minutes.
- Optimizes auto-focusing times.

MAGAVISION ONE

CASA system for semen quality analysis



MAGAVISION
one

MAGAPOR
INTEGRATED
SYSTEM

18 Kg
61 x 43 x 55 cm

> A simpler CASA system for fast and accurate analysis of the main semen quality parameters:

- **Total and progressive motility**
- **Concentration**

Discriminate agglutination

Full and simple analysis of ejaculate:

- Objective and exact.
- Quick analysis.
- Provides the number of doses.
- Analyses 0.5 sec. video at 30 frames.

- Real 1 Mpx camera.
- Allows data export in Excel format

Magavision One is the ideal CASA system to get started in standardized analysis.



COUNTING CHAMBER
5 analyses per chamber.

25 units



MICROPIPETTE
0,5µL to 10µL

MAGASLIDE

Hot plate



- Equipped with a PID regulator that provides very precise temperature control and more gradual heating, while reducing oscillations.
- Regulator precision 0.1°C.
- Made of stainless steel and nylon.
- Equal distribution of temperature over the plate's entire surface.

CE

 4,8 Kg
 35 x 35 x 20 cm
  2,5 Kg
 Plate: 32,5 x 22,5 x 3,5 cm
 Thermostat: 15 x 10 x 9,5 cm


MAGACELL

Colorimeter



Calculation of the number of semen doses.

- Instant absorbance readings or direct dose data.
- LCD high contrast digital reader.
- Speed and precision when calculating the number of doses.

 3 Kg
 34 x 31 x 20 cm

CUVETTES

Standard square section cuvette. Colourless and transparent under ultraviolet light.

 100 units/box

NUCLEOCOUNTER

Cell count



It determines the total concentration and percentage of sperm viability through fluorescence.

- Analyses sperm concentration in 30 seconds.
- Direct analysis method.
- Highly repeatable analyses.
- No calibration is required.
- Low volume load is required.
- No maintenance is required.

Necessary consumables:

- Cassette (100 pcs)
- Reagent (5L)

MICROSCOPES

Ergonomic, highly robust and stable, with coaxial controls on both sides for macro and micrometric focusing.



M03 High-quality trinocular microscope.
With CCIS optics and equipped with brightfield, dark-field, polariser and negative phase contrast. Ideal for research and dose production. Adaptable for CASA systems and heated stage option.
Objectives: 4x - 10x - 40x - 100x and 10x negative

📦 40 x 20 x 40 cm / 8,6 kg

📦 40 x 58 x 26 cm / 10 kg



MASTER 7 Advanced trinocular microscope.
With UCIS optics and equipped with brightfield, dark-field, polariser and negative phase contrast. Adaptable for CASA systems and heated stage option.
Objectives: 4x - 10x - 40x - 100x and 10x negative

📦 30 x 25x 40 cm / 6 kg

📦 50 x 50 x 30 cm / 8 kg



MASTER 5 Trinocular microscope.
For seminal analysis and dose production.
Heated stage option.
Objectives: 4x - 10x - 40x - 100x.

📦 30 x 25x 40 cm / 6 kg

📦 50 x 50 x 30 cm / 8 kg



MASTER 3 Binocular microscope.
For routine use for motility control and seminal contrast.
Objectives: 4x - 10x - 40x - 100x

📦 38 x 21 x 23 cm / 5 kg

📦 43 x 31 x 25 cm / 6 kg



STERILIZATION OVEN 80 to 140 litres



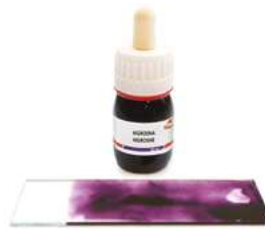
ELECTRONIC MICROPIPETTE



BÜRKER CHAMBER



IMMERSION OIL 



EOSIN-NIGROSIN 



MICROPIPETTES



PIPETTES



SLIDES AND COVERS



TIPS



HIGH PERFORMANCE EXTENDERS

Spermax, Duragen and Vitasem

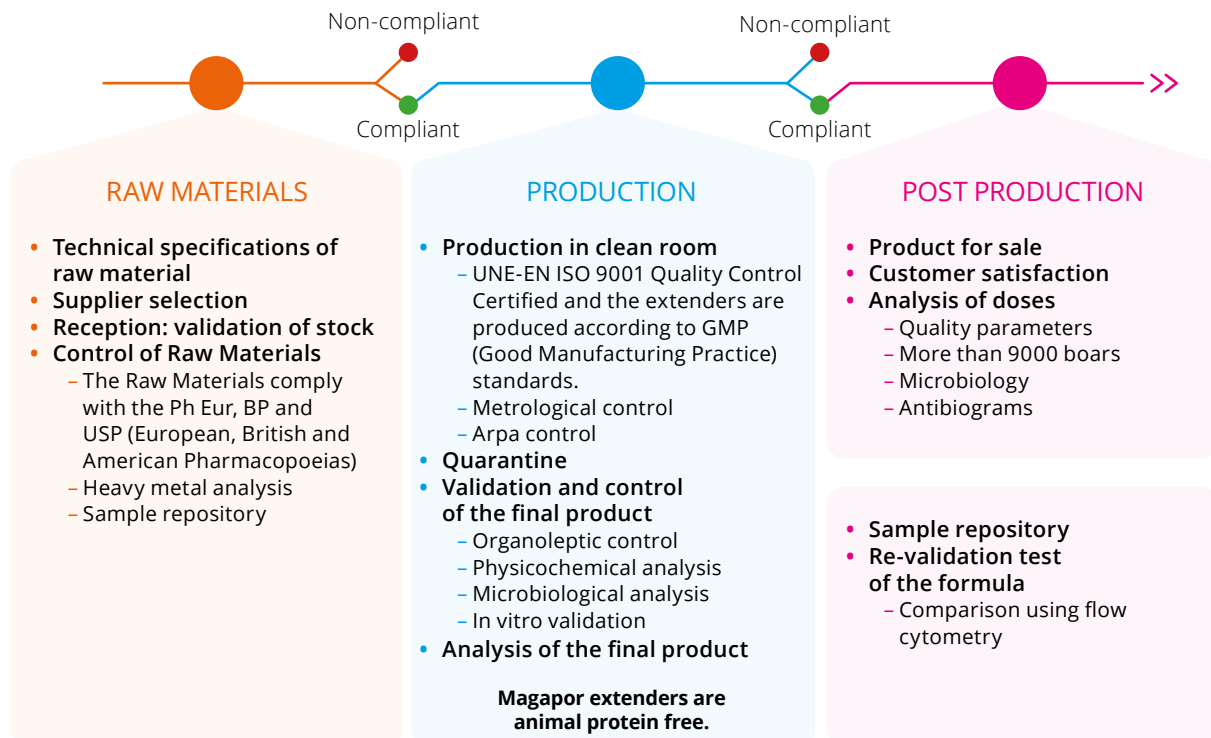


- > The high performance of Spermax, Duragen or Vitasem, offers maximum protection, **maximises the fertilising capacity** of the semen doses and decisively contributes to the production results of pig farms.

THE BEST PROLIFICITY AND FERTILITY RESULTS

Demanding and differentiating quality controls

Magapor implements the most rigorous quality controls for its high performance extenders.



MAXIMUM PERFORMANCE TO OBTAIN THE BEST RESULTS



SPERMAX

Spermax is the latest extender developed by Magapor.

Its innovative formula contains anti-oxidants, membrane protectors and latest generation energy precursors.

- Maintains mitochondrial activity under optimal conditions for interaction of the sperm with the female's reproductive tract.
- Protects sperm during storage and transport, guaranteeing maximum vitality at fertilisation.
- Provides maximum energy for sperm and long-term protection for semen doses.
- Improved antibacterial action.

Spermax is synonymous with peace of mind during storage and transport over short and long distances, guaranteeing the best result.



DURAGEN

Duragen offers significant dose protection for the best results.

Its formula is a balanced combination of anti-oxidants and membrane protectors that:

- Offers additional protection against lipo-peroxidation of the sperm membranes.
- Avoids premature sperm capacitation in the most demanding situations.
- Has a broader antibacterial action, ensuring greater protection.

Duragen protects against the thermal stress that sperm can undergo. It is an ideal extender to produce doses by dilution in two steps.



VITASEM

VitaseM was our first high performance extender.

It represents a quantitative and qualitative leap compared to short and medium-term extenders. VitaseM's success is based on its formula, which:

- Protects sperm from changes in the environment.
- Includes anti-oxidants and membrane protectors.
- Has an antibiotic combination that ensures preservation of the doses.

VitaseM ensures correct preservation of the semen doses.

AVAILABLE FORMATS

	CASE	BOX
1 litre	25 sachets	6 cases
5 litres	-----	60 sachets
100 litres	-----	3 sacks

PACKAGING DIMENSIONS

	CASE	BOX
1 litre	11 x 28 x 12 cm - 1,2 Kg	39,5 x 23,5 x 30 cm - 8 Kg
5 litres	-----	39,5 x 23,5 x 30 cm - 14 Kg
100 litres	-----	39,5 x 23,5 x 30 cm - 14 Kg



HIGH PERFORMANCE EXTENDERS

OPTIMAL pH
6,9 - 7,5

STABILISATION TIME
15 - 20 min

OPTIMAL OSMOLALITY
290 - 320 (mOsm/Kg)

° BRIX
3,8 - 4,5

OPTIMIA Y BIOPIG

Magapor extenders for semen preservation



OPTIMIA

Biological solution with exclusive Magapor formula for preservation of semen. Its formulation boosts antibacterial and buffering capacity and consequently increases safety levels in the semen doses produced.

Manufactured under Magapor quality standards.



BIOPIG

Enhanced BTS extender with broad-spectrum antibiotic protection.

Manufactured under Magapor quality standards.

OPTIMIA BIOPIG

OPTIMAL pH

6,9 - 7,5

STABILISATION TIME

15 - 20 min

OPTIMAL OSMOLALITY

325 - 350 (mOsm/Kg)

° BRIX

4,2 - 4,9

**AVAILABLE
FORMATS**

BOX	
1 litre	200 sachets
5 litres	60 sachets
100 litres	3 sachets

**PACKAGING
DIMENSIONS**

BOX	
1 litre	39,5 x 23,5 x 30 cm - 10,5 Kg
5 litres	39,5 x 23,5 x 30 cm - 15 Kg
100 litres	39,5 x 23,5 x 30 cm - 14,5 Kg



DICOL

Extender for semen collection

EFFICIENT SOLUTION FOR PREVENTING AND FIGHTING CONTAMINATION



Dicol is a **extender** formulated by Magapor to resolve contamination problems.

It is used as a collection extender during the collection phase, which guarantees rapid sanitisation of the ejaculate and controls bacterial contamination, before final dilution with the usual Magapor extenders.

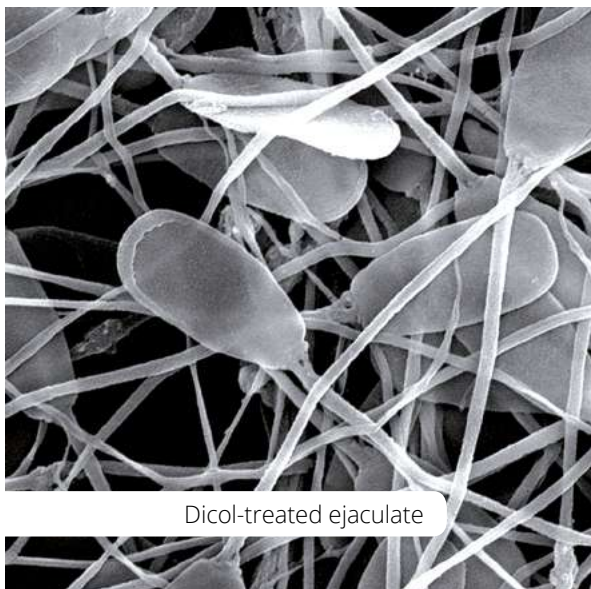
Case: 10 x 28 x 12 cm 1,4 Kg
Box: 39.5 x 23.5 x 30 cm 8 Kg

Format for 1 litre
25 envelopes x 6 cases

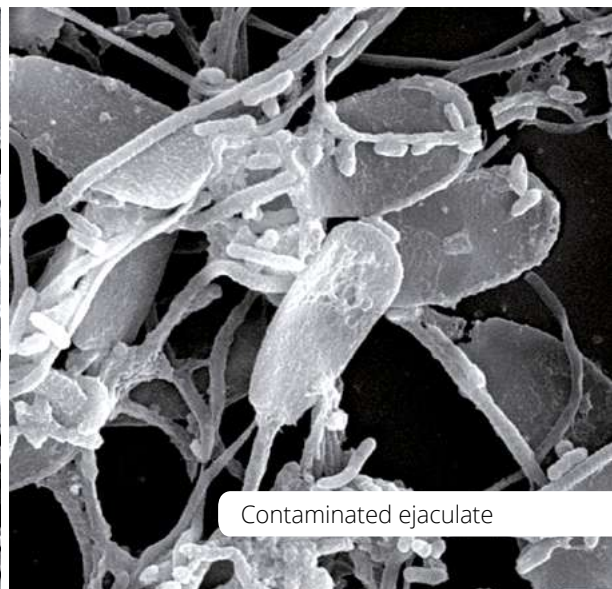


BOAR STUDS WITH CONTAMINATION ISSUES HAVE BEEN ABLE TO CONTINUE WORKING WITH GOOD PRODUCTIVE RESULTS ON THE FARM THANKS TO THE USE OF DICOL

OPTIMAL pH	STABILISATION TIME
6,9 - 7,5	15 - 20 min
OPTIMAL OSMOLALITY	° BRIX
290 - 320 (mOsm/Kg)	3,8 - 4,5



Dicol-treated ejaculate



Contaminated ejaculate

EXTENDERBOX M2

Equipment for reconstituted extender preparation with no waiting time.

PROVIDES THE REQUIRED AMOUNT OF EXTENDER AT THE DESIRED TEMPERATURE, RECONSTITUTED PRECISELY AND WITH NO WAITING TIME

PRACTICAL INNOVATION



> Equipment to prepare reconstituted extender instantly and at the required temperature, using the concept of concentrated extender.

It consists of two modules: one to heat the water instantaneously and the other with two independent pumps, controlled by two high-precision scales, which dispense the water and the concentrated extender to obtain the reconstituted extender.

Performance and productivity:

- High dispensing speed 160 Litres/h in a standard production process.
- It heats only the water needed immediately.

Precision:

- Exact dosage (+/- 1gr).
- Two high precision scales.
- High dispensing accuracy considering the density of each extender.

Safety and hygiene:

- Its closed circuit prevents the risk of water contamination.
- Made of stainless steel and fibreglass.

TECHNICAL CHARACTERISTICS



230 V - 50-60 Hz - 2000w
 Maximum flow 200 L/h*
 Maximum scale capacity 20 Kg
 Resolution +/- 2gr
 *Whitout production cuts.



100 Kg
70 x 65 x 55 cm

120 Kg
80 x 60 x 90 cm

Why use a concentrated extender?

- You get only the reconstituted extender you need.
- You can save unused concentrated extender.
- The preparation is much faster.
- Help system for the preparation of concentrated extender.

EXTENDERBOX M2+

Equipment for reconstituted extender preparation with no waiting time.



› Equipment to prepare reconstituted extender instantly and at the required temperature, using the concept of concentrated extender.

This version includes two heat exchangers that work together for faster preparation of concentrated diluent:

- High dispensing speed of up to 300Litres/h in a non-stop production process.
- Avoids flow losses.

*Manufactured to order.

E-MIX



High power magnetic stirrer for the preparation of concentrated diluent.

ORBITAL SHAKER



Orbital shaker to homogenise the mixture of the reconstituted diluent.

E-DISPENSER

Maximum precision dosing equipment



- › Dispenses the required volume at high speed and very precisely thanks to the built-in high flow peristaltic pump and precision scales.

Connectivity.

Allows job data entry via:

- Touch screen.
- PC connected via Ethernet. Transmission of work orders via Gesipor 360.
- Bar code reading.



MAGAPOR INTEGRATED SYSTEM

29 Kg
40 x 37 x 29 cm

32 Kg
60 x 42 x 52 cm

TECHNICAL CHARACTERISTICS



50/60 Hz | 250W | 110/230 V
Nominal/max flow 10 L/ min (distilled water)
Maximum scales capacity and resolution 20 kg +/- 2gr

EASYDIL

Tank for preparing reconstituted extender



- › Device designed for warming and mixing up to 100 L of extender.

- Made entirely from stainless steel.
- Features magnetic stirrer.
- PID type temperature controller for precise regulation with an error margin of less than +/- 0,5°.
- Orifices in the cover for filling and emptying the fluid.
- Low electricity consumption.



50 Kg
Ø 58 x h 75 cm

60 Kg
60 x 80 x 93 cm

TECHNICAL CHARACTERISTICS



230 V | 50/60 Hz
Nominal power 750W
Precision +/- 0,5°C
Stirrer speed 0-400 rpm
Warm-up time: 100 L 3-4 hours

OSMO6

Reverse osmosis equipment

- › Device that produces type II (ASTM) distilled water using drinking water from the public supply.
 - Equipped with a reverse osmosis pump (from 240 L/day).
 - Easily assembled housing for access to filters and their easy replacement.
 - Instantaneous reading of conductivity at 3 points.
 - Connection via RS232 serial port.
 - Stainless steel tank with level sensor and ultraviolet lamp, from 100 litres (optional)
 - Production monitoring via the Magapor APP.



CE

15 Kg
52 x 30 x 50 cm

17 Kg
34 x 60 x 60 cm

OSMO6 uses a series of filters and elements that must be replaced regularly to obtain the highest quality of produced water:

- Granular activated carbon pretreatment cartridges.
- Resin cartridges.
- Amicrobic cartridge.
- Reverse osmosis membrane

The resistivity of the purified water produced is $\geq 5 \text{ M}\Omega \cdot \text{cm}$ at 25°C.

The water produced meets or exceeds ASTM, CAP, CLSI and ISO 3696/BS 3997 quality standards.

PRE-OSMO6

External water pre-treatment

- › Additional compact external pretreatment for the OSMO6. Intended for locations where the initial water quality does not meet the minimum quality parameters and an extension of the pre-treatment stage is required.



CE

47 x 47 x 19 cm

BM 20

Water bath

- › Thermostatic water bath to maintain a constant temperature of the ejaculate samples and laboratory instruments.
 - Made entirely of stainless steel for better hygiene and durability.
 - Capacity 20 litres.
 - Digital temperature control, with a high precision regulator, accurate to 0.1°C.
 - Temperature range, 25–40°C.



CE

12 Kg
55 x 38 x 22 cm

13 Kg
60 x 40 x 28 cm



BP-02
Peristaltic pump

80 to 140 litres



MAGNETIC STIRRER
Heated

5.5 kg
39 x 24 x 22 cm



DISTILLED WATER
Type 2 distilled water.

5L
4 x box



SEMEN DYES
For marking doses.

20 ml



JARS AND FLASK BAGS
For 3 and 5 L.



SAVOGERM
pH neutral soap.

5L
4 x box



GLOVES
Disposable vinyl or latex gloves.



100L BAG
100 litre disposable plastic bag.

BAGMATIC N40

Automatic packaging and labelling of semen doses, 1200 pcs/hour



› **Maximum speed and precision in packaging:**

- Packs up to 1200 pcs/hour.
- High dosing precision +/- 1g.
- New pump with stepper motor, more precise and quieter.

Software and connectivity:

- Auto-check function for rapid incident diagnosis.
- Can operate independently from a PC.

More intuitive:

- Large 10" high resolution touch screen and intuitive interface.
- Illumination system for clear and visual information of the equipment status.

Robust, compact and easy to clean:

- Built from stainless steel and fibreglass.
- Labeller housed inside the device, accessible through a removable tray, which prevents splashing.

Easy use and maintenance:

- Low maintenance mechanics
- Equipped with a bag and liquid presence detector.
- Easier and faster threading system.
- Uses the first and last bag on the roll.
- Built-in fixed Teflon.

Operates with both **Semenbag** (up to 90 mL) and **Smallbag** (up to 45 mL)



85 Kg
140 x 50 x 92 cm

95 Kg
60 x 80 x 130 cm

TECHNICAL CHARACTERISTICS



110/230 V - 50/60 Hz - 200 W
Pneumatic pressure 6-8 bar

Optional:

- Self-calibrating scale
- Packaging holder
- Recirculation pump for pools

SIMPLYMATIC N2

Automatic packaging of semen doses, up to 900 units/hour



SIMPLE AND INTUITIVE SOLUTION FOR AUTOMATING PACKAGING PROCESSES

PRACTICAL INNOVATION



CE

65 Kg
120 x 50 x 75 cm

75 Kg
60 x 80 x 130 cm

Quick, simple and resistant:

- Robust construction in aluminium and stainless steel profiles that facilitate cleaning operations.
- Touch screen for interactive control and information on the status of the device.

TECHNICAL CHARACTERISTICS



110/230 V - 50/60 Hz - 200 W
Working pressure 6-8 bar
1250 bag roll

SIMPLYBAG E1

Semi-automatic packaging of semen doses



CE

25 Kg
91 x 38 x 59 cm

- Semi-automatic electrical equipment for packaging semen doses.
- The operator simply needs to separate the bags whilst the machine is running.
- Bags are filled using a time-controlled peristaltic pump.

SEMENBAG Y SMALLBAG

Semen dose packaging bags with reprotoxicity control (RTC)

THE BLISTER WITH RTC



> Produced under the strictest of quality controls, Semenbag and Smallbag preserve their contents under the best conditions.

Packaging and formats developed for your comfort at the Boar Stud

- Automatic Semenbags and Smallbags come in rolls of 1250

units, saving you time when changing rolls.

- Exterior packaging designed to save space and be more practical when replacing the roll.



SEMENBAG AUTOMATIC

1 roll x 1250 units 6,5 Kg
41 x 41 x 30 cm



SMALLBAG AUTOMATIC

1 roll x 1250 units 6,5 Kg
41 x 41 x 30 cm



SEMENBAG MANUAL
Precut

3 rolls x 500 units 9,3 Kg
60 x 40 x 28 cm

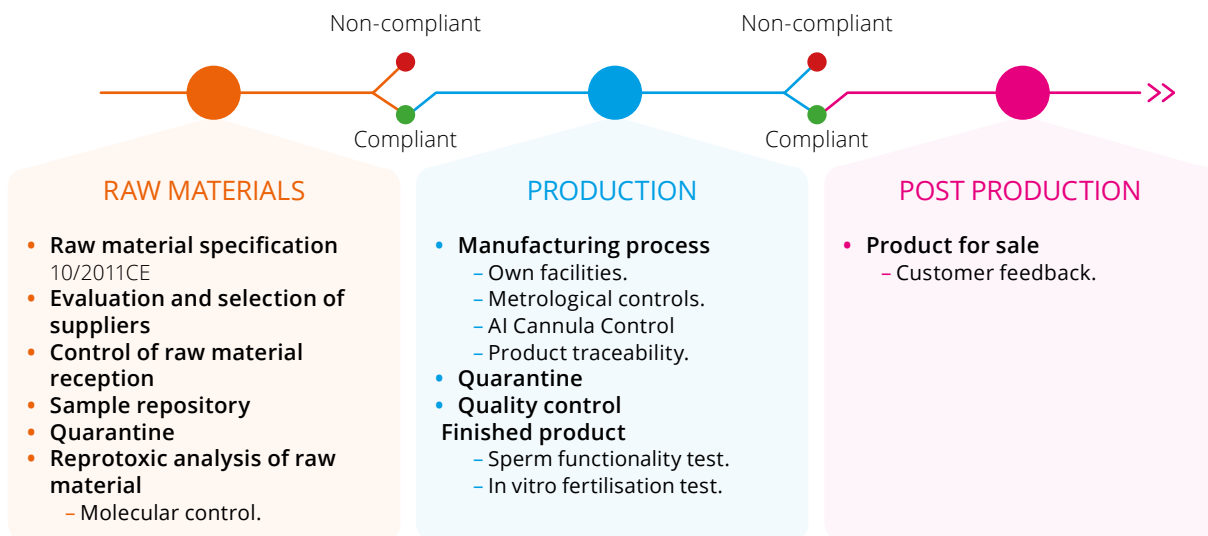
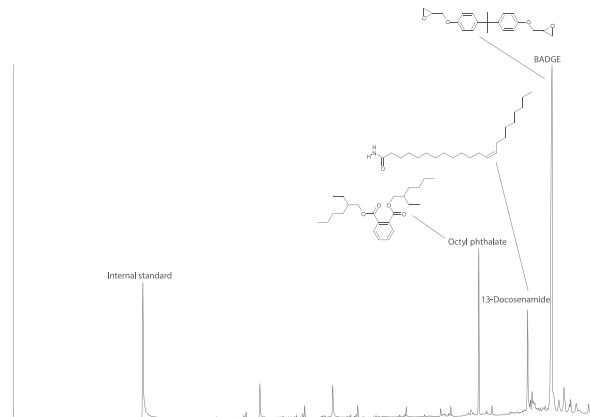
RTC

Reproductive Toxicity Control



RTC is a set of quality control tools that Magapor carries out at a chemical and biological level, in partnership with the University of Zaragoza, on its packaging to offer a “safe for reproduction” product.

This strict process guarantees a product controlled for the presence of Phthalates, Bisphenol A, Badge, Cyclic lactone and Nonylphenol that could develop reprotoxic effects by means of migration to the semen doses.



TH-SEM

Real-time temperature control.



> Device for monitoring, recording and processing the temperature of chambers, doses and facilities.

- Alarm system by sending an email when the device's temperature is out of range.
- Allows the display of the entire temperature history.
- Connection via NB-IoT mobile data card.

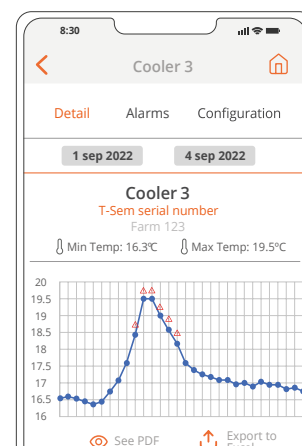
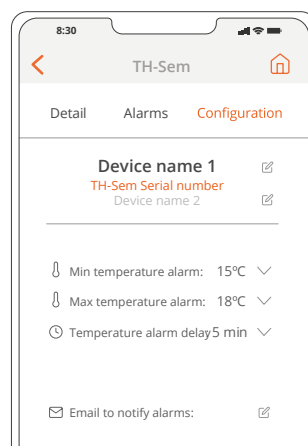
 252 g
11 x 9 x 5 cm

 197 g
10,5 x 8,5 x 3,5 cm

MAGAPOR APP

With the Magapor App you can:

- Perform all the configuration of the devices in a fast, simple and flexible way.
- Consult, filter, synchronize and download all temperature record information.
- Allow access to several users.
- Configure email addresses for alarms.
- Export data from your device in PDF or Excel.



SEMEN COOLERS


Equipment for preservation of semen doses, avoiding thermal shock and keeping doses in optimal condition. With temperature regulation with a neutral zone that reduces energy consumption and extends the compressor's life.

- Air recirculation for a perfectly balanced temperature.
- Thermostat with alarm.
- Temperature resolution 0.1°C.
- Interior temperature range 15-40°C.



Z-100

- Nominal volume: 131 L.
- Optimal Semenbag doses: 280
- Nominal power: 65 W

 26,5 Kg
55,3 x 57,4 x 84,5cm

 30 Kg
59,3 x 58 x 88 cm



Z-300

- Nominal volume: 241 L.
- Optimal Semenbag doses: 520
- Nominal power: 200 W

 36 Kg
54 x 55 x 143 cm

 40 Kg
57 x 59 x 147 cm



Z-450

- Nominal volume: 344 L.
- Optimal Semenbag doses: 680
- Nominal power: 270 W

 70 Kg
60 x 74 x 185 cm

 72 Kg
72 x 76 x 190 cm



Z-600

- Nominal volume: 520 L.
- Optimal Semenbag doses: 820
- Nominal power: 292 W

 85 Kg
78 x 74 x 186 cm

 93 Kg
82 x 78 x 210 cm



COOL BOX

NT-30

- Peltier cell thermoelectric heating and cooling.
- Digital regulator with resolution 0.1°C
- Built-in neutral zone that reduces the power consumption of the box and extends its useful life.
- CFC-free cooling element.
- Nominal power: 75 / 65-80 W.
- Voltage: 220 VAC/12-24 DC.
- Frequency: 50/60 Hz.
- Consumption: 4 A (12 Vdc).
- Nominal volume: 34 L
- Optimal Semenbag doses: 120

NT-110

- Heating and cooling by gas compression circuit.
- Digital regulator with resolution 0.1°C
- Built-in neutral zone that reduces the power consumption of the box and extends its useful life.
- CFC-free cooling element.
- Nominal power: 220/75 W.
- Voltage: 100-230 VAC/12-24 DC.
- Frequency: 50/60 Hz.
- Consumption: 12,5 A (12 Vdc)
- Nominal volume: 105 Litres.
- Optimal Semenbag doses: 435.

*Electrical pre-installation on the vehicle is required.



CE
 10 Kg
 55 x 38 x 46 cm
 11,2 Kg
 58 x 40 x 49 cm



CE
 33 Kg
 96 x 53 x 47 cm
 38 Kg
 100 x 58 x 51 cm






DATALOGGER USB
 Temperature reading and storage.

DATAPAD
 For direct reading and configuration.



FOAM CATHETER
With/without adapter

 With adapter: 800 units/box
 Without adapter: 1000 units/box
 11 Kg
 40 x 60 x 46 cm



GILT FOAM CATHETER

 500 units/box
 7 Kg
 40 x 60 x 26 cm



YELLOW SPIRAL CATHETER

 1000 units/box
 18 Kg
 40 x 60 x 46 cm



ORANGE SPIRAL CATHETER

 1000 units/box
 20 Kg
 40 x 60 x 46 cm



iGREEN[®]
ecocatheter

iGREEN CATHETER
Ecocatheter

The first catheter with biodegradable tube for swine artificial insemination

 **PRACTICAL INNOVATION**

 500 units/box
 6 Kg
 40 x 80 x 35 cm

CATHETERS FOR POSTCERVICAL INSEMINATION

More than 20 years working in postcervical artificial insemination



MAGAXS

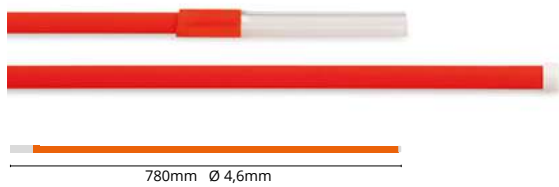


MAGAPLUS S

- Design and flexibility for easy insemination and harmless to the sow.



MAGAX

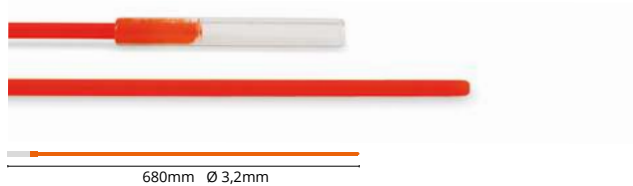


MAGAPLUS

- Use of a guiding catheter is not necessary.



MAGAXN

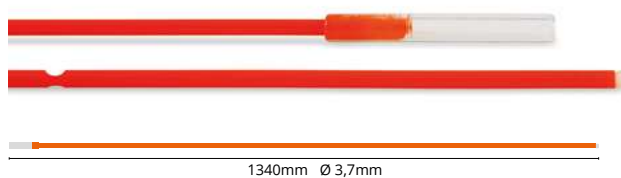


MAGAPLUS N

- Specific length and diameter for nulliparous sows.



MAGAXDD



MAGAPLUS DD

- Double deposition probe for deep intra-uterine insemination.



FARMVISION

Portable machine vision system for semen quality analysis



- > Portable on-farm machine vision system that analyses the sperm motility of doses quickly and easily.

FarmVision helps to perform a routine control of the semen status before insemination.

The equipment is controlled via the mobile App "FarmVision". Through the App you send the instruction for analysis, and the system automatically indicates, taking into account the motility of the sample, whether the dose is suitable for use or not.

- Provides greater dose control, improving on-farm protocols.
- Performs an accurate analysis in less than 1 minute.

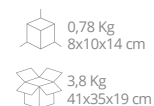
- The equipment has an integrated heating plate for warming samples and analysis material.

Accessories:

- 1 box of counting chambers (125 analyses).
- 1 Variable volume micropipette 0,5-10 μ L.
- Tips for micropipette (1000 pcs).
- 1.5 mL microtubes (100 pcs).

FarmVision Data Service

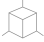
Service for processing analysis and data storage. It also allows analysis and reports to be viewed by different users and on different mobile devices.



MAGASCAN

Wi-Fi ultrasound machine

- Depth: 100-180mm adjustable
- Transmission to mobile device (tablet or smartphone)
- Measurements of distance, area and obstetrics.
- Waterproof probe and tablet.
- High quality image.
- Includes 8" tablet and protective casing.
- With carry case.

CE  2,7 Kg
45 x 40 x 12 cm  3 Kg
50 x 40 x 15 cm



FAT SCAN

Back fat scanner

- Measures mm thickness and dorsal fat layers by ultrasound.
- Measuring range: 4 to 40 mm.
- Display in M mode.
- Long working time, up to 22 hours.
- Includes calibration column and carrying case.

 2,1 Kg
35 x 36 x 22 cm



RACCORD CATHETER

For auto-insemination


- Length: 490 mm

 1000 units/box



HIGIPAL

Hygiene wipes

 150 wipes/pack
24 packs/box

 1000
wipes/tub



AI GEL

Insemination lubricating gel

 5 litres
4 units/box



ULTRASOUND GEL

With dispenser

 5 litres
4 units/box

BLUE LINE

New line of natural solutions



ESPERMAPLUS

Nutritional supplement exclusively for boars.

Nutritional supplement specially designed to supply the needs of high genetic value boars and optimise both sperm production and libido.

📦 25 kg sack 40 x 12 x 70 / 25 kg

📦 5 sacks of 1 kg per box 30 x 21 x 22 / 5,3 kg



PHEROBOAR

Boar pheromones

Set of synthetic pheromones for detecting estrus in sows, improving fertility and reducing non-productive days. Contains blue dye to mark treated sows.

📦 100 ml bottle (300 applications)

📦 3 bottles pack 15 x 7,5 x 17,5 cm



VITALPIG

Complementary energizing feed for piglets

Boosts colostrum intake from the first moments of life, reducing pre-weaning mortality. Specifically developed to be rapidly absorbed by the piglet from the first moments of life.

📦 250 ml bottle

📦 6 bottles pack 19 x 13 x 14 cm / 1,7 kg



BLUESKIN

Topical solution for dermatological care

Topical solution of natural origin for skin regeneration. Formulated with ingredients intended for skin maintenance and hydration. Contains P. citrodorum essential oil, which helps repel insects in the applied areas.

📦 250 ml bottle

MAGAPOR APP

The knowledge base is updated in real time for swine breeding professionals



Parameters

You can compare the main semen quality parameters of your boar stud with a database of more than 9000 boars, updated in real time

Surveys

Consult and comment on different swine reproduction issues, compared with answers from previous periods to see changes in trends and the different ways of working around the world

Publications

Access a library of technical publications on the most relevant topics influencing swine reproduction, constantly updated

and much more...

Anstant access to your extender batch validation reports, news, photos ... and all this in 18 languages!



Download it
now from the
App Store



Download it
now from
Google Play





Magapor S.L.

www.magapor.com

